



CHERRY HILL SCHOOL DISTRICT

ESTELLE V. MALBERG EARLY CHILDHOOD CENTER

32,300 SF 1959, 2008

Site

Additional Site Improvements - ADA Compliance, Site Drainage, Paving, Signage, etc., Replacement (District Consultant)

Qty	Unit Cost	Cost Estimate
	Lump Sum	\$1,200,000
	25% Soft Costs (A/E Fees, Contingency, CM, Legal, etc.)	\$300,000
	Estimated Total	\$1,500,000

Exterior Renovations

Masonry Repairs - Window Lintels, Windows, Coating EIFS Repairs, Caulking, etc.

Exterior Door Replacement

New Front Canopy - Main Entrance

Lump Sum	\$300,000
6 @ \$10,000	\$60,000
Lump Sum	\$150,000
Subtotal	\$510,000
25% Soft Costs (A/E Fees, Contingency, CM, Legal, etc.)	\$127,500
Estimated Total	\$637,500

Interior Renovations

Classroom Flooring - New VCT Flooring & Base and Painting

New Corridor LED Lighting and Ceiling Replacement and Painting Walls

New Interior Fire-Rated Doors, Frames, Closers, ADA Modifications, Intruder Hardware

Renovate Unisex Staff & Classroom Toilet Rooms - Finishes, Fixtures, ADA Compliance

Teacher's Lounge - Replace Finishes, Sink, Cabinet, Stove, Refrigerator

New ADA Compliant Interior Signage

All Purpose Room - Replace Finishes, New Ceilings, New LED Lighting, Replace Folding Door and HC Stage Lift

Hazardous Materials Abatement - VAT, Pipe Insulation, etc. (District Consultant)

19,000 SF @ \$12	\$228,000
4,714 SF @ \$25	\$117,850
76 @ \$4,000	\$304,000
8 @ \$50,000	\$400,000
Lump Sum	\$50,000
32,300 SF @ \$1	\$32,300
Lump Sum	\$250,000
Lump Sum	\$200,000
Subtotal	\$1,582,150
25% Soft Costs (A/E Fees, Contingency, CM, Legal, etc.)	\$395,538
Estimated Total	\$1,977,688



CHERRY HILL SCHOOL DISTRICT

ESTELLE V. MALBERG EARLY CHILDHOOD CENTER

32,300 SF 1959, 2008

Building Systems

HVAC Construction

New Unit Ventilators - Remove Existing Perimeter Units, New Unit Ventilators with New Air Conditioning (APR), New Perimeter Hot Water Radiation, Book Shelving, etc.

Exhaust Fans - Replace Rooftop Units

Replacement of the Pneumatic Energy Management System with New DDC Electronic Controls

Qty	Unit Cost	Cost Estimate
	Lump Sum	\$1,244,770
14 @	\$2,500	\$35,000
32,300 SF @	\$6.00	\$193,800
	Subtotal	\$1,473,570
	25% Soft Costs (A/E Fees, Contingency, CM, Legal, etc.)	\$368,393
	Estimated Total	\$1,841,963

Electrical Construction

Replace PA System, Clock System and Technology

Power/Lighting Branch/HVAC Panel Upgrades

	Lump Sum	\$52,911
4 @	\$25,000	\$100,000
	Subtotal	\$152,911
	25% Soft Costs (A/E Fees, Contingency, CM, Legal, etc.)	\$38,228
	Estimated Total	\$191,139



CHERRY HILL SCHOOL DISTRICT

ESTELLE V. MALBERG EARLY CHILDHOOD CENTER

32,300 SF 1959, 2008

	Total Estimated Cost	ACTUAL State Share	Local Share
Site Work	\$1,500,000	(\$600,000)	\$900,000
Exterior Renovations	\$637,500	(\$255,000)	\$382,500
Interior Renovations	\$1,977,688	(\$791,075)	\$1,186,613
HVAC Construction	\$1,841,963	(\$736,785)	\$1,105,178
Electrical Construction	\$191,139	(\$76,456)	\$114,683
Total Renovations	\$6,148,290	(\$2,459,316)	\$3,688,974
		40%	60%

Renovations = Architect's estimate of eligible projects @ 40% State Aid



CHERRY HILL SCHOOL DISTRICT

ESTELLE V. MALBERG EARLY CHILDHOOD CENTER

32,300 SF 1959, 2008

Additional Site Improvements
- ADA Compliance, Site
Drainage, Paving, Signage,
etc., (District Consultant)

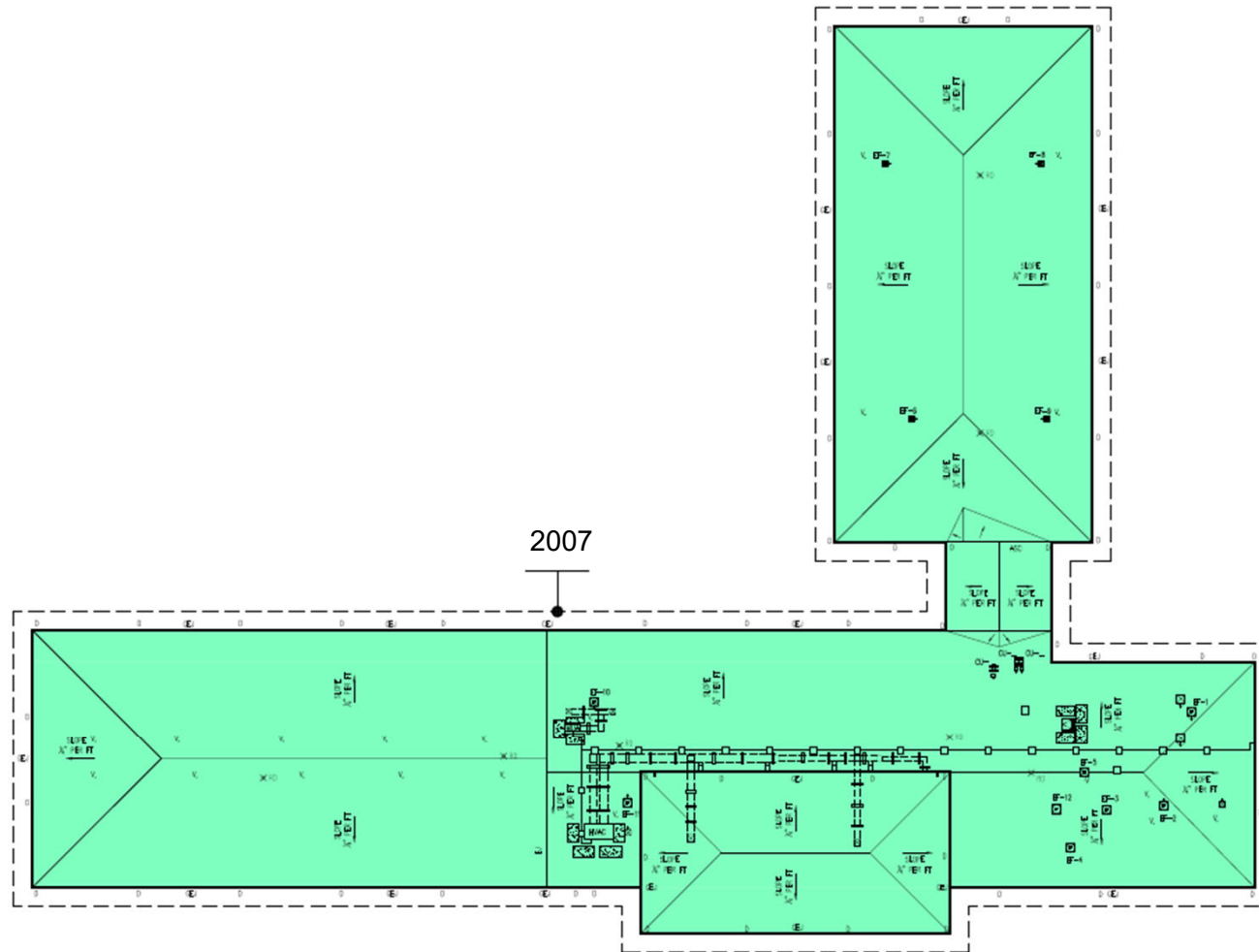




CHERRY HILL SCHOOL DISTRICT

ESTELLE V. MALBERG EARLY CHILDHOOD CENTER

32,300 SF 1959, 2008



1 ROOF PLAN
RP-1.0 SCALE: 1/32"=1'-0"



CHERRY HILL SCHOOL DISTRICT

ESTELLE V. MALBERG EARLY CHILDHOOD CENTER

32,300 SF 1959, 2008

LEGEND

FLOORING

CLASSROOMS FLOORING - NEW VCT & BASE

CEILING/LED/PAINT

NEW CORRIDOR & CLASSROOM CEILING TILE, NEW LED LIGHTING & PAINTING WALLS THRU-OUT



NEW INTERIOR DOORS, FRAMES & ADA HARDWARE THRU-OUT



NEW EXTERIOR DOORS, FRAMES & ADA HARDWARE



UNIT VENTILATOR REPLACEMENT



BUILDING RENOVATION AREA



BATHROOM RENOVATION



REBUILD H/C RAMP / STEPS



NEW MAIN ENTRANCE CANOPY

